



CELUS eats SUSHI for breakfast...

...and delivers insights by **dinner lunch**

CELUS is a powerful, yet simple and affordable online software for automated harvesting and analysis of COUNTER and non-COUNTER usage statistics, suitable for single libraries, library consortia, publishers, R&D departments of big companies and even governmental organizations.

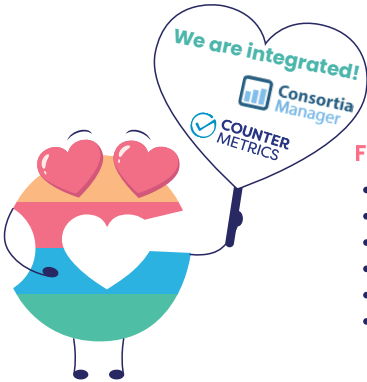
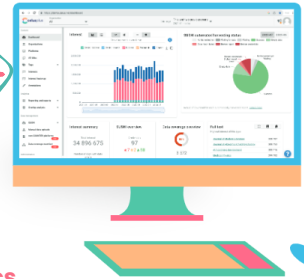
Focus on what your statistics mean, not how to piece them together.



How does CELUS help librarians?

- Effortless SUSHI Management
- Processing custom non-COUNTER reports
- Manual uploads of historical usage data
- 24/7 Customer support
- No setup, no installation - a web-based application

All usage stats in one place!



Fast and powerful data analytics

- Comprehensive reporting module
- ACRL IPEDS and ARL reporting in one click
- Identification of overlapping subscriptions
- Cost-per-use analysis
- Tagging Platforms and Titles
- Year-to-year usage comparison even between different COUNTER versions

CELUS is hungry! Help him find some SUSHI!

